

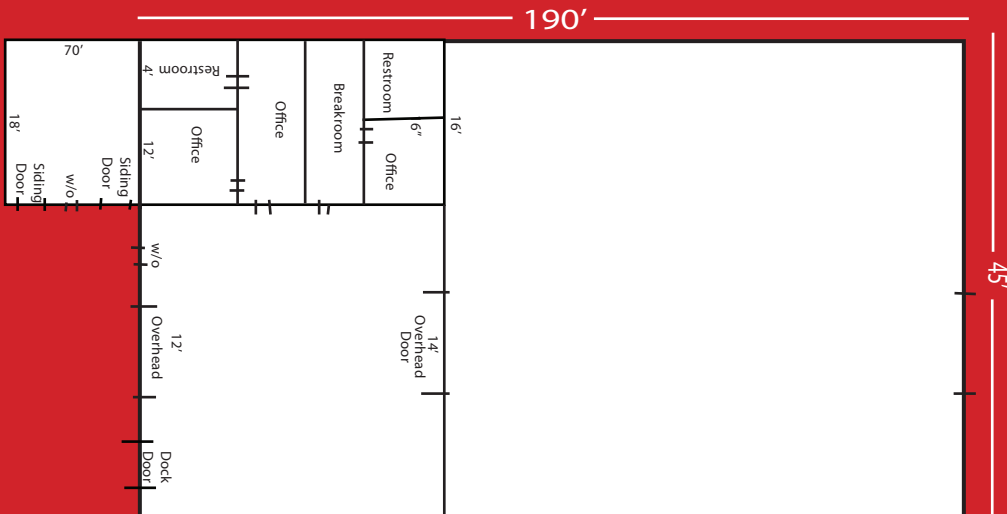


730 A Avenue, Seymour, Indiana

812-522-6000

BUILDING #15

- 8,500 Sq. Ft.
- 16 Ft. Eve Hts.
- 1,200 Sq. Ft. Out Building
- 1 Electric Dock
- 2 Walkout Docks
- 1 - 14 Ft. Overhead Door
- Heated Building
- 12x12 Office Heated/Air
- 12x16 Office Heated/Air
- 2 Restrooms
- 1 Break Room Heated



We can accomodate *your* needs.
From floor to ceiling, wall to wall.

