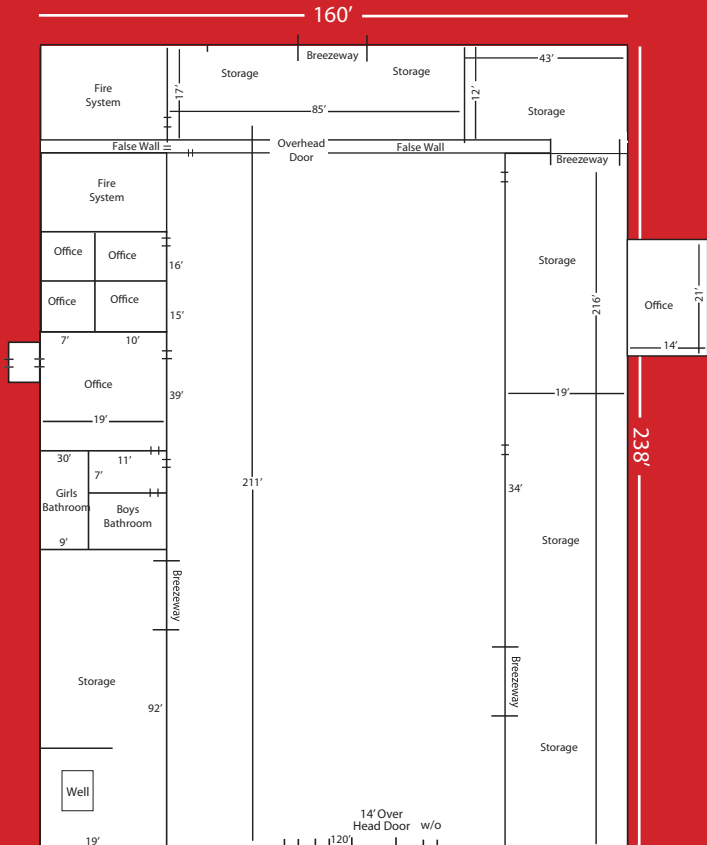




809 A Avenue, Seymour, Indiana

812-522-6000

BUILDING #13



- 26,000 Sq. Ft.
25 Ft. Eve Hts.

- 1,450 Sq. Ft.
14 Ft. Eve Hts.

- 5,500 Sq. Ft.
10 Ft. Eve Hts.

- 7 Offices

- 2 Bathrooms

- 2 Docks

- 1 - 14 Ft.
Overhead Door



We can accomodate *your* needs.
From floor to ceiling, wall to wall.



730 A Avenue | Seymour, Indiana | 812-522-6000 | www.rangerwarehousing.com

A Division of Kocolene Development Corporation